



EAPL/SP/2026/V1

#TheWiseChoice

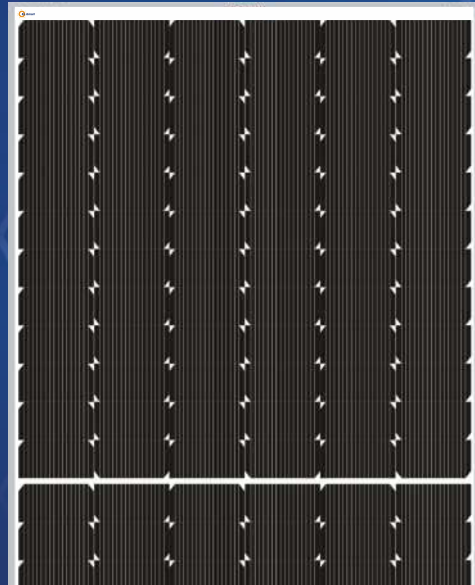
Solar Panels

(DCR/NON-DCR)



Solar Panels

(DCR/NON-DCR)



Government Subsidy Available
PM Suryaghar Yojana

Avail central government subsidy
₹ 78,000 + Additional State Subsidy*
(Only for DCR Solar Panels)

Why Choose Eastman Solar Panels?



Get More Power, Spend Less

High efficiency panels convert more sunlight into electricity — reducing your overall system cost and increasing returns on every panel installed.



Consistent Performance, Year After Year

Potential Induced Degradation (PID) resistant with low degradation — your panels maintain efficiency over time with minimal performance loss due to aging or environmental factors.



Built to Withstand Indian Weather

Strong mechanical load capacity handles high winds, heavy rains, and physical stress — durable and reliable in the harshest conditions.



Decades of Worry-Free Power

Designed for long-term continuous performance — rely on your Eastman panels for years without worrying about breakdowns or efficiency dips.



BIS & ALMM Certified — Government Approved

Fully compliant with Indian quality standards — trusted, verified, and eligible for PM Suryaghar Muft Bijli Yojana subsidies and government incentives (DCR Solar Panels).



22%–25%+ Module Efficiency

More power generated from the same roof space, making your solar system more cost-effective per square foot.

*Subsidy is available only for Residential Rooftop Installation

What's Inside

1. About Eastman	4-5
2. Solar Panels - DCR	6-7
3. Solar Panels - NON DCR	8-9
4. Eastman Assure Service	10

Forever Forward.

For India, Its People and What Comes Next

ENERGY TRANSITION COMPANY

Purpose-built to move India and its people permanently forward.

We operate at the intersection of where energy access meets everyday life: last mile e-mobility that puts livelihoods in motion, Residential Solar with Storage that brings energy independence to homes and businesses and advanced electronics manufacturing that builds the technological backbone of a cleaner economy.





₹5601 Cr.*
FY25-26 Turnover



CAGR 29.6%
Last 4 Fiscal Years



Over **4100+**
Employees



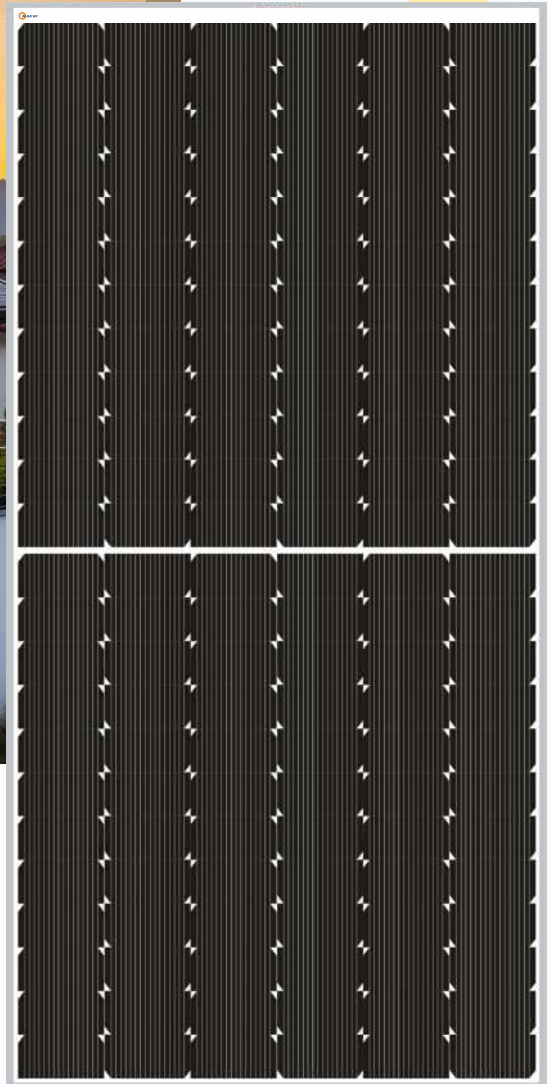
1900+
Distributors

Solar Panels DCR



Up to
30
YEARS*
WARRANTY
ON PANEL PERFORMANCE

Capacity DCR (Wp):
500W - 625W

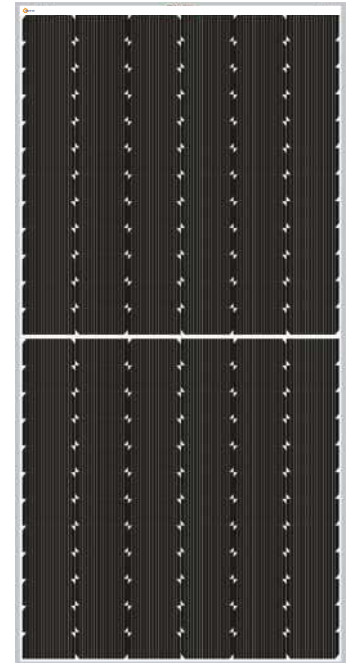


Solar Panels

DCR

Eastman's DCR Solar Panels are available in three high-performance variants. The 500W & 550W Monocrystalline Bifacial panel captures sunlight from both front and rear sides – boosting energy generation by harvesting reflected light, ideal for open rooftops and elevated mounting structures.

The 580 & 620W/625W TOPCon panel uses next-generation TOPCon (Tunnel Oxide Passivated Contact) technology – delivering higher efficiency, lower degradation, and superior performance in low-light and high-temperature conditions. All variants are DCR certified, qualifying for subsidy under PM Suryaghar Muft Bijli Yojana. Backed by a warranty of up to 30 years for maximum long-term returns.



Reliability

Life. Uninterrupted.

BIS & ALMM Compliant (India)

Peace of mind knowing you're using a certified, high-quality product that qualifies for government benefits.

PID Resistant & Corrosion Resistant

Long-term durability, even in challenging conditions, means you won't need to worry about panel degradation or reduced efficiency.

Durable Glass & Frame Structure

Less chance of damage during storms or rough weather, so you can rely on the system to perform consistently.

Total Cost of Ownership

A Lifetime of Value

Module Efficiency Up to 22-23%+

Get more energy from the same amount of sunlight, leading to better value and faster returns on investment.

Suitable for Rooftop Projects

Whether you're looking to power your home or a small business, these panels can meet your needs.

Long Lifespan

You get a reliable energy source for the long haul, with minimal maintenance or replacement costs.

Parameter	EBP500W-DCR	EBP550W - DCR	ETC TOPCON 580W - DCR	ETC TOPCON 620/625W - DCR
Model Type	Monocrystalline Bifacial		TOPCon (G to G)	TOPCon (G to G)
Cell Type	M10	M10	M10R	G12R
System Voltage	1500VDC	1500VDC	1500VDC	1500VDC
Busbar	P Type 10BB	P Type 10BB	N Type 16BB	N Type 16BB
Rating Wp	500W	550W	580W	620W/625W
Panel Voltage	24V	24V	24V	24V
Dimension (L*W*T) mm	2278x1134x30	2278x1134x35	2278x1134x30	2382x1134x30
Weight (in Kg)	27.50Kg	28.00 Kg	33.50Kg	34.00 Kg
Product Warranty	25 Years*	27 Years*	27 Years*	30 Years*

*T&C Apply

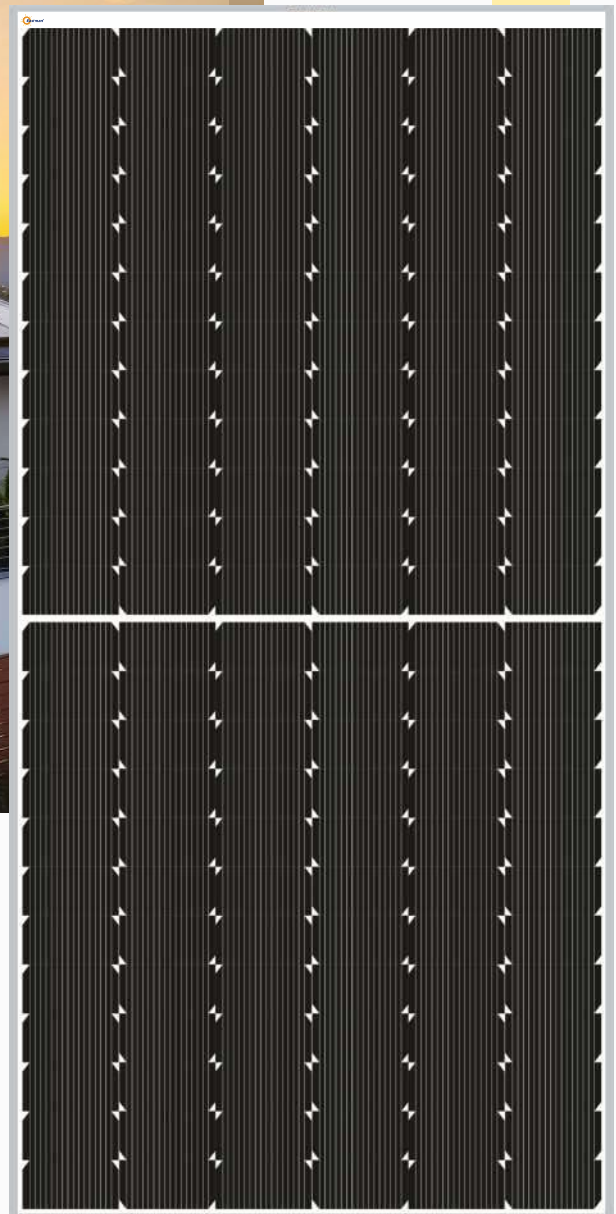
Note: As part of regular product updates, specifications may be revised without prior notification.

Solar Panels NON - DCR



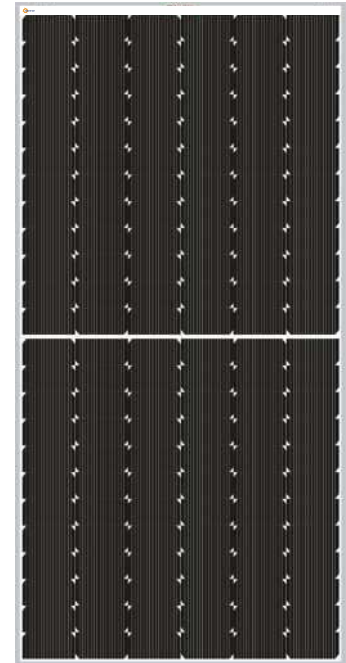
Up to
30
YEARS*
WARRANTY
ON PANEL PERFORMANCE

Capacity NDCR (Wp):
50W - 640W



Solar Panels NON - DCR

Eastman's Non-DCR Solar Panel range offers versatile options across four high-performance variants. The 50W panel suits small off-grid and portable applications, while the 125W & 210W panel is ideal for mid-size rooftop and rural installations. The 550W Bifacial panel captures sunlight from both sides – boosting yield through reflected light for open rooftop setups. The 600W & 640W TOPCon panel delivers peak efficiency using advanced Tunnel Oxide Passivated Contact technology – excelling in low-light and high-temperature conditions.



Reliability

Life. Uninterrupted.

- BIS & ALMM Compliant (India)**
Peace of mind knowing you're using a certified, high-quality product that qualifies for government benefits.
- PID Resistant & Corrosion Resistant**
Long-term durability, even in challenging conditions, means you won't need to worry about panel degradation or reduced efficiency.
- Durable Glass & Frame Structure**
Less chance of damage during storms or rough weather, so you can rely on the system to perform consistently.

Total Cost of Ownership

A Lifetime of Value

- Module Efficiency Up to 22-23%+**
Get more energy from the same amount of sunlight, leading to better value and faster returns on investment.
- Suitable for Rooftop & Utility Projects**
Whether you're looking to power your home or a large business, these panels can meet your needs.
- Long Lifespan**
You get a reliable energy source for the long haul, with minimal maintenance or replacement costs.

Technical Specifications:

Parameter	EMP50W NDCR	EMP125W NDCR	EMP210W NDCR	EBP550W NDCR	ETC TOPCON 600W - NDCR	ETC TOPCON 640W - NDCR
Model Type	Monocrystalline			Monocrystalline Bifacial	TOPCon (G to G)	
Cell Type	M10	M10	M10	M10	G12R	G12R
System Voltage	1000VDC	1000VDC	1000VDC	1500VDC	1500VDC	1500VDC
Busbar	P Type 10BB	P Type 12BB	P Type 12BB	P Type 10BB	N Type 16BB	N Type 16BB
Rating Wp	50W	125W	210W	550W	600W	640W
Panel Voltage	12V	12V	12V	24V	24V	24V
Dimension (L*W*T) mm	415x615x30	1010x665x35	1485x665x35	2278x1134x35	2278x1134x30	2278x1134x30
Weight (in Kg)	4.5 Kg	7.30Kg	10.780 Kg	28.00 Kg	30.00 Kg	32.00 Kg
Product Warranty	25 Years*	25 Years*	25 Years*	27 Years*	30 Years*	30 Years*

*T&C Apply

Note: As part of regular product updates, specifications may be revised without prior notification.



Round-the-Clock Service

At Eastman, great products deserve equally great service. Through Eastman Assure, we've built a customer-first ecosystem that ensures quick resolutions, proactive support, and peace of mind — every step of the way.



AI-Powered Voice Bot

- Get instant support anytime without waiting or follow-ups.
- Raise requests and check warranty or complaint status in seconds.

 **78884 78885**



24x7 Call Centre

- Expert help is always available, day or night.
- Quick, reliable support for installation, service, and troubleshooting.

 **1800-419-8610**



Online Complaint Management

- Track your complaint in real time with complete visibility.
- Stay informed at every step until your issue is resolved.



Eastman Assure Portal

- One place for all your service needs, simple and convenient.
- Manage warranty, complaints, and service history with ease.



We are 24x7 Available!

+91 78728 78728
WhatsApp

1800 419 8610
Toll Free Number

www.eastmanassure.com
Service Portal



☎ 1800 419 8610 | ☎ +91 78884 78885



Eastman Auto & Power Ltd.

Corporate Office: Quattro Towers, Plot No. 249E, Udyog Vihar Phase IV, Gurugram,
Haryana-122016, India | support@eaplworld.com | ☎ 78728 78728
www.eaplworld.com

 **MADE IN INDIA**