



#TheWiseChoice

# Solar Lithium Batteries



# Solar Lithium Batteries



## Why Choose Eastman Lithium Solar Inverter Batteries?



### Easy to Install

Allows quick mounting and wiring without custom enclosures or complex setup.



### Eastman iConnect App - Monitoring

Check your battery's health on your Mobile - Charge status, fault alerts and diagnostics all in one place.



### Smart BMS - Battery Management System

Ensures battery stays protected, performs at its best and lasts years longer.



### Longer Life

Lasts longer. Costs less over time - every rupee you spent keeps working far longer.



### Maintenance-Free

Install it and forget about it. No maintenance visits, no consumable costs - the battery runs reliably on its own for years.

# What's Inside

---

<b>1.</b>	About Eastman	<b>4-5</b>
<b>2.</b>	Solar Lithium Battery (Wall Mount)	<b>6-7</b>
<b>2.</b>	Solar Lithium Battery (Rack Type)	<b>8-9</b>
<b>3.</b>	Solar Lithium Battery (LIB)	<b>10-11</b>
<b>4.</b>	Eastman iConnect App	<b>12</b>
<b>5.</b>	Eastman Assure Service	<b>13</b>

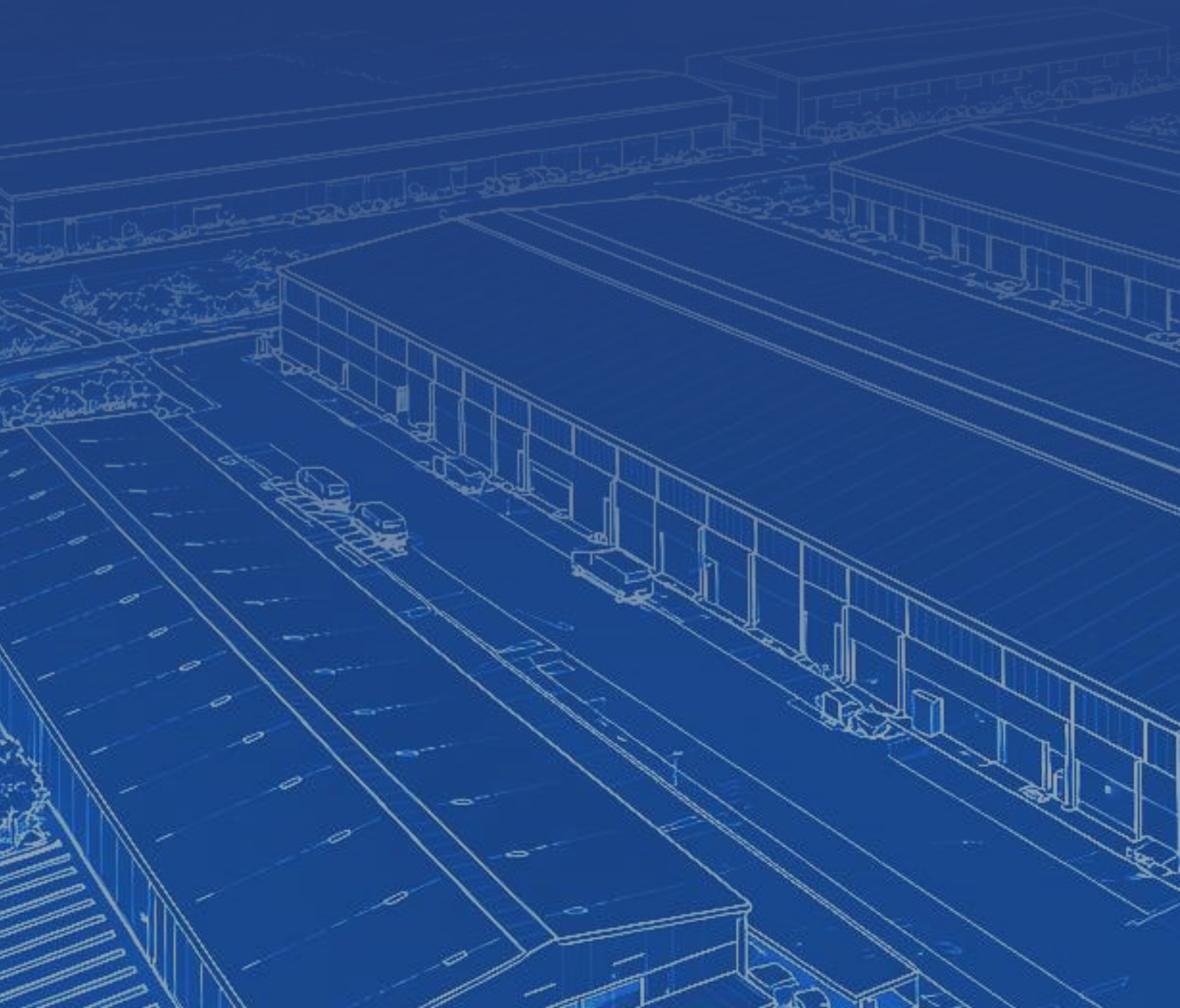
# Forever Forward.

For India, Its People and What Comes Next

## ENERGY TRANSITION COMPANY

Purpose-built to move India and its people permanently forward.

We operate at the intersection of where energy access meets everyday life: last mile e-mobility that puts livelihoods in motion, Residential Solar with Storage that brings energy independence to homes and businesses and advanced electronics manufacturing that builds the technological backbone of a cleaner economy.





**₹5601 Cr.\***  
FY25-26 Turnover



**CAGR 29.6%**  
Last 4 Fiscal Years

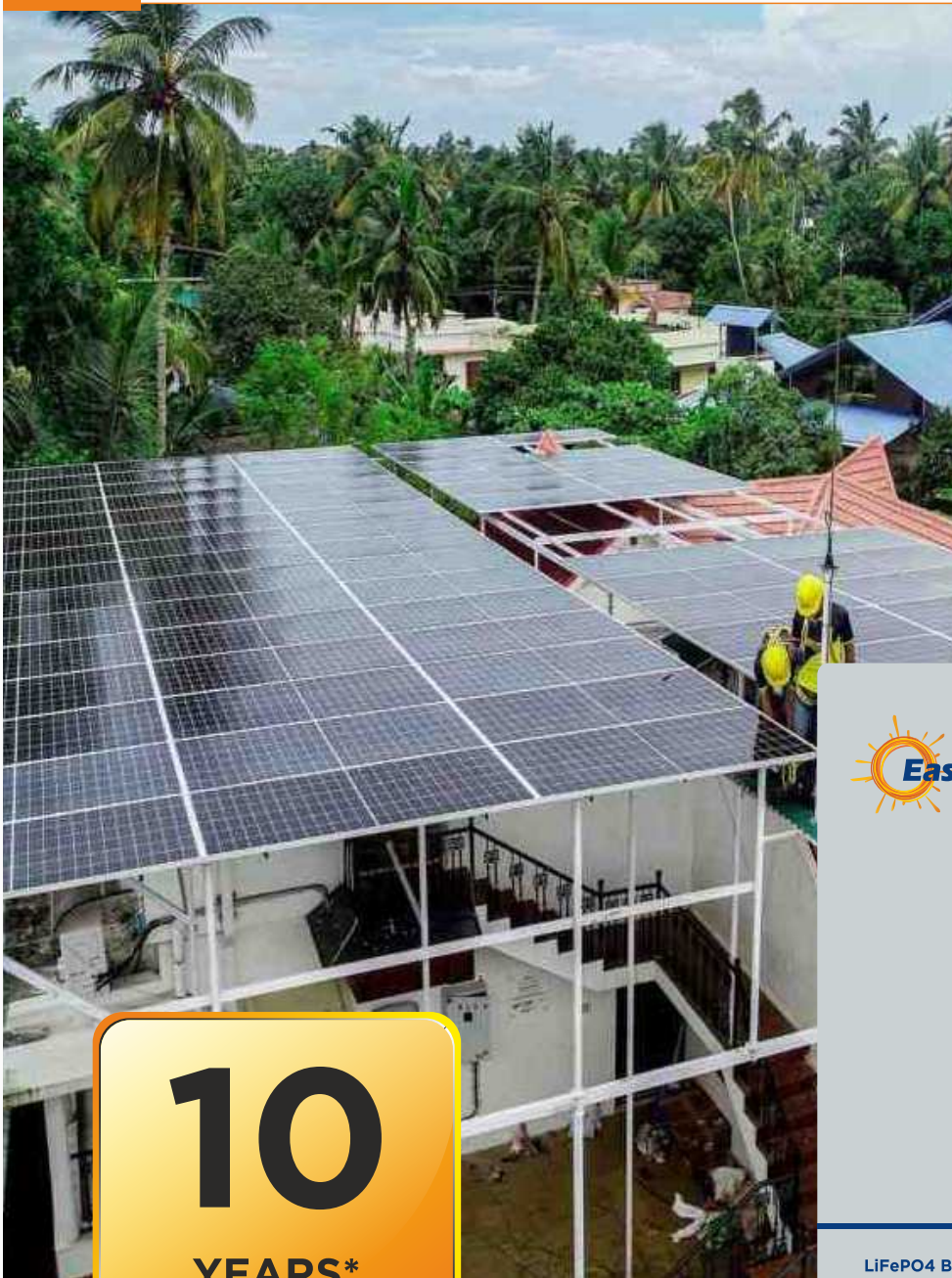


Over **4100+**  
Employees



**1900+**  
Distributors

# Solar Lithium Battery (LiFePO4) Wall Mount



**10**  
**YEARS\***  
**WARRANTY**



## Models:

ES51.2-100LP-10Y

ES51.2-100LP



Eastman Intelligence - Powering Smart Connectivity to the external world, putting real-time data at your fingertips. Experience seamless access anytime, anywhere with the Eastman iConnect App.



Powered By:

**Eastman**  
**Intelligence**

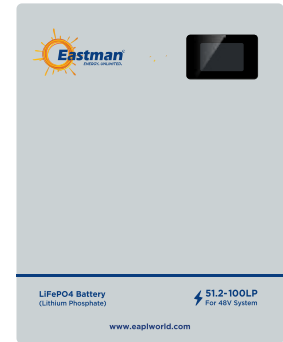
# Solar Lithium Battery (LiFePO4) - Wall Mount



Upgrade your energy storage with the Eastman Wall Mounted Lithium Phosphate (LiFePO4) Battery – a smart, space-saving solution crafted for modern homes and businesses. Sleek and compact, it can be easily mounted on any wall, helping you save valuable space. Stay informed with real-time operation status through the built-in LCD screen, giving you complete control and efficiency over your power needs.

Compatible with Eastman Solar Hybrid Inverters, it offers deep cycle performance, longer lifespan and enhanced safety compared to conventional batteries. Perfect for India's frequent power cuts, it ensures reliable backup, maximises solar self-consumption and delivers uninterrupted power for all your essential energy requirements.

**5 YEARS\***  
WARRANTY



### Reliability

Life. Uninterrupted.

- Lighter in Weight - Easy to Handle & Install**  
No heavy lifting, no extra labour cost, no space hunting - it fits where you need it and moves when you do.
- Eastman iConnect App - Monitoring**  
Check your battery's health on your Mobile - Charge status, fault alerts and diagnostics all in one place.
- Smart BMS - Battery Management System**  
Ensures battery stays protected, performs at its best and lasts years longer.

### Total Cost of Ownership

A Lifetime of Value

- Longer Life**  
Lasts longer. Costs less over time - every rupee you spent keeps working far longer.
- Maintenance-Free**  
Install it and forget about it. No maintenance visits, no consumable costs - the battery runs reliably on its own for years.
- Scalable - Parallel Connection up to 15 Units**  
Add Batteries basis your needs: The same system scales up without replacing anything. Energy storage that grows with you.

## Technical Specifications:

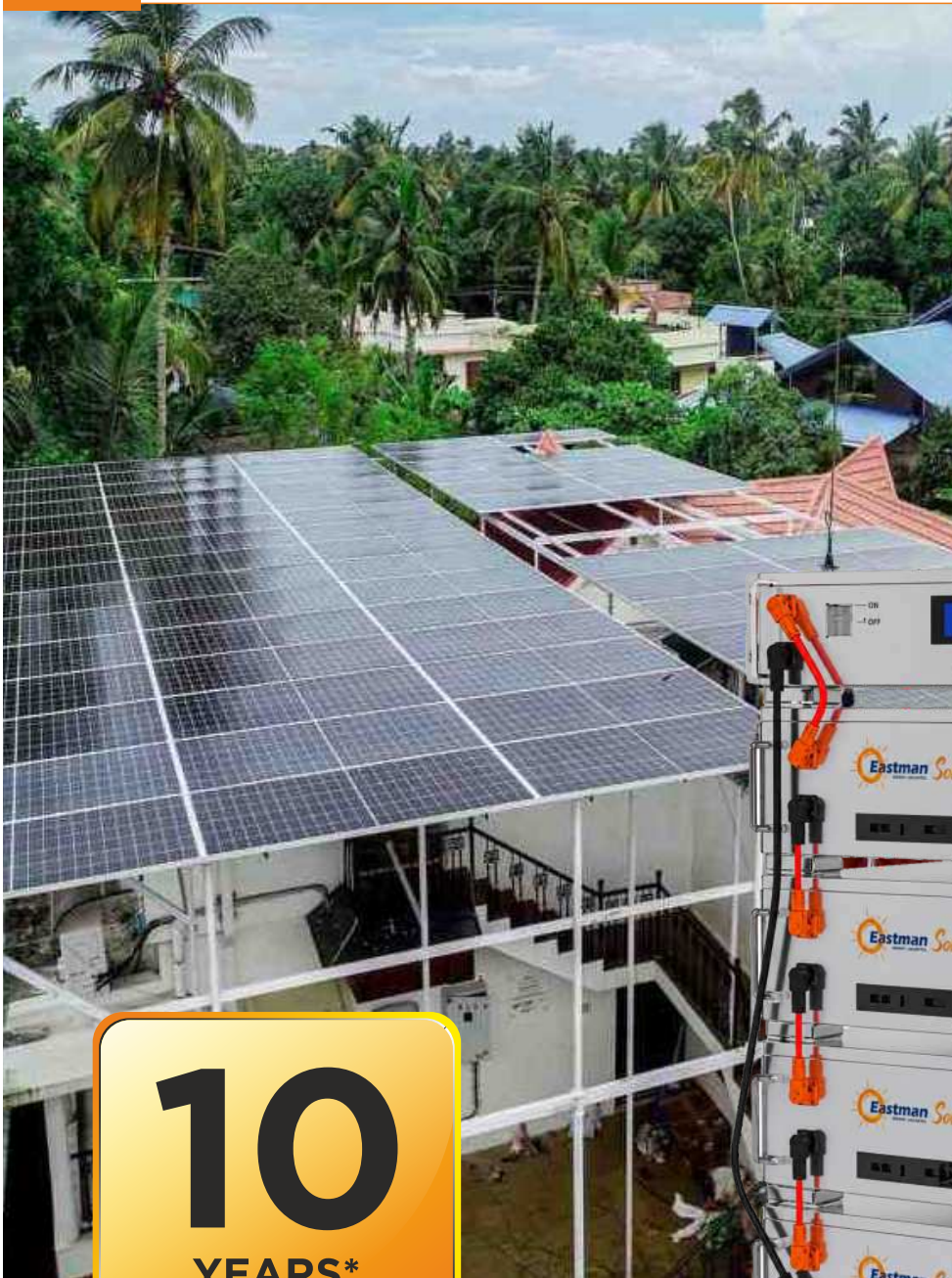
Product Model	ES51.2-100LP Wall Mount	ES51.2-100LP-10Y Wall Mount
Array Mode	16S	16S
Nominal Energy(kWh)	5.12	5.12
Nominal Voltage(V)	51.2	51.2
Charge Voltage(V)	100	100
Discharge Cut-off Voltage(V)	58.4	58.4
Rated Capacity(Ah)	41.6	42
Standard charging Current(A)	20	20
Max. Continuous Charging Current(A)	100	100
Max. Continuous Discharging Current(A)	100	100
Cycle Life	1825 Cycle, 80%DOD, 70%SOH	3650 Cycle, 70%DOD, 60%SOH
Communication Mode	RS48S/CAN/RS232	RS48S/CAN/RS232
Parallel Connection	Yes, upto 15 units	Yes, upto 15 units
Operating Temperature	Charging: 0-60° C; Discharging: -10°C-65°C	Charging: 0-60° C; Discharging: -10°C-65°C
Size (LxWxH) mm	560*470*170	560*470*170
Net Weight (Kg)	-46	-46
Gross Weight (Kg)	-51	-51
Warranty	5 Years*	10 Years*
Altitude	4000m	4000m
Humidity	<90%RH	<90%RH
Shelf Temperature	10°C-60°C	10°C-60°C
Design Life	10+ Years at 25°C/77°F	10+ Years at 25°C/77°F
Certification	BIS 16270  IEC62619  CE  UN38.3  UN3480  MSDS	BIS 16270  IEC62619  CE  UN38.3  UN3480  MSDS

**Note:** As part of regular product updates, specifications may be revised without prior notification.

Eastman Solar Lithium Batteries to be used with Hybrid Inverters

\* Considering one cycle per day | T&C Apply

# Solar Lithium Battery (LiFePO4)



**10**  
YEARS\*  
WARRANTY



Powered By:



**Eastman  
Intelligence**

**Model:**  
ES 204.8V-100Ah to 512V-100Ah (High Voltage Battery)



Eastman Intelligence - Powering Smart Connectivity to the external world, putting real-time data at your fingertips. Experience seamless access anytime, anywhere with the Eastman iConnect App.

# Solar Lithium Battery (LiFePO4)

Powered By:



Upgrade your energy storage with the Eastman Lithium Phosphate (LiFePO4) Battery — a smart, space-saving solution crafted for modern homes and businesses. Stay informed with real-time operation status through the built-in LCD screen, giving you complete control and efficiency over your power needs.

Compatible with Eastman Solar Hybrid Inverters, it offers deep cycle performance, longer lifespan and enhanced safety compared to conventional batteries. Perfect for India's frequent power cuts, it ensures reliable backup, maximises solar self-consumption and delivers uninterrupted power for all your essential energy requirements.



### Reliability

Life. Uninterrupted.

- Rack type - Easy to Install**  
Allows quick mounting and wiring without custom enclosures or complex setup.
- Eastman iConnect App - Monitoring**  
Check your battery's health on your Mobile - Charge status, fault alerts and diagnostics all in one place.
- Smart BMS - Battery Management System**  
Ensures battery stays protected, performs at its best and lasts years longer.

### Total Cost of Ownership

A Lifetime of Value

- Longer Life**  
Lasts longer. Costs less over time - every rupee you spent keeps working far longer.
- Maintenance-Free**  
Install it and forget about it. No maintenance visits, no consumable costs - the battery runs reliably on its own for years.
- Scalable with Parallel Connection**  
Add Batteries basis your needs: The same system scales up without replacing anything. Energy storage that grows with you.

## High Voltage Battery Technical Specifications:

Model	ES204.8V-100AH	ES256V-100AH	ES307.2V-100AH	ES358.4V-100AH	ES384V-100AH	ES 409.6V-100AH	ES460.8V-100AH	ES512V-100AH
<b>Cell</b>								
Capacity(Ah)	100							
Max. Continuous Charging Current (A)	100							
Max. Continuous Discharging Current (A)	100							
<b>PDU</b>								
Max. Continuous Charging Current (A)	120							
Max. Continuous Discharging Current (A)	100							
<b>Battery Module Specification</b>								
Cell Configuration (Module)	16S 1P	16S 1P	16S 1P	16S 1P	15S 1P	16S 1P	16S 1P	16S 1P
Nominal Energy (kWh)	20.48	25.6	30.72	35.84	38.4	40.96	46.08	51.2
Nominal Voltage (V)	204.8	256	307.2	358.4	384	409.6	460.8	512
Charge Voltage (V)	233.6	292	350.4	408.8	438	467.2	525.6	584
Discharge Cut-off Voltage (V)	169.6	212	254.4	296.8	318	339.2	381.6	424
Standard Charging Current(A)	50							
Standard Discharging Current(A)	50							
Max. Continuous Charging Current (A)	100							
Max. Continuous Discharging Current (A)	100							
Cycle Life	3650 Cycles @80% DOD @35°C @0.8C/0.8C @70% SOH							
Communication Mode	RS485/CAN							
Operating Temp	Charging: 0-55°C Discharging: -10°C-60°C							
Module Dimension (LxWxH) mm	610x440x175							
Net Weight (kg)	250	300	350	400	376	450	500	550
Package Size (LxWxH) mm	610x440x800	610x440x1000	610x440x1200	610x440x700(*2)	610x440x700(*2)	610x440x700(*2)	610x440x700(*2)	610x440x700(*2)
Warranty	10 Years							
Array Mode	4S	5S	6S	7S	8S	8S	9S	10S

**Note:** As part of regular product updates, specifications may be revised without prior notification.

# Solar Lithium Battery (LIB)



**5**  
**YEARS\***  
**WARRANTY**



## Ranges:

**EM LIB 160** (12.8V-100Ah)

**EM LIB 320** (25.6V-100Ah)

**EM LIB 640** (51.2V-100Ah)



Powered By:

**Eastman**  
**Intelligence**



Eastman Intelligence - Powering Smart Connectivity to the external world, putting real-time data at your fingertips. Experience seamless access anytime, anywhere with the Eastman iConnect App.

\*T&C Apply

Powered By:



# Solar Lithium Battery (LiB)

The Eastman Solar Lithium Battery (LiB) redefines home and office power solutions. Powered by advanced Lithium Technology, it delivers fast charging, longer backup, and a truly maintenance-free experience.

Its compact, lightweight design is safe for indoor use, while its eco-friendly, acid-free construction ensures zero fumes and zero hassle. Combining reliability, safety, and sustainability, it's the smarter choice for uninterrupted power whenever you need it.



### Reliability

Life. Uninterrupted.

**Lighter in Weight — Easy to Handle & Install**

No heavy lifting, no extra labour cost, no space hunting — it fits where you need it and moves when you do.

**Eastman iConnect App - Monitoring**

Check your battery's health on your Mobile - Charge status, fault alerts and diagnostics all in one place.

**Smart BMS - Battery Management System**

Ensures battery stays protected, performs at its best and lasts years longer.

### Total Cost of Ownership

A Lifetime of Value

**Longer Life**

Lasts longer. Costs less over time - every rupee you spent keeps working far longer.

**Maintenance-Free**

Install it and forget about it. No maintenance visits, no consumable costs — the battery runs reliably on its own for years.

## Technical Specifications:

Product Model	EM LIB 160	EM LIB 320	EM LIB 640
Battery Rating	12.8V-100Ah	25.6V-100Ah	51.2V-100Ah
Battery operating Voltage (V)	10.6-14.6	21.2-29.2	42.4-58.4
Operating Temp Range (Charging)	0-60°C	0-60°C	0-60°C
Recommended Charge Current	20A	20A	20A
Recommended Discharge Current	50A	50A	50A
Battery Mass	≈ 13 kg	≈ 27 kg	≈ 46 kg
Warranty	5 Years*	5 Years*	5 Years*
Battery Dimension (mm) LxWxH	330*210*160	460*308*202.5	460*440*207
BMS Type	Smart	Smart	Smart

\*T&C Apply

**Note:** As part of regular product updates, specifications may be revised without prior notification.

# Eastman iConnect App

## Smart Control in Your Hands



Enhance your power backup experience with intelligent energy management designed for modern homes and businesses. The Eastman Lithium Hybrid Inverter delivers seamless performance with real-time power optimization, smart battery compatibility, and efficient energy utilization. Stay in control with reliable backup, faster charging, and uninterrupted comfort—giving you greater confidence during every power outage.



**Real-Time Power Status:** Monitor live battery backup, charging status, and power consumption anytime, anywhere. Stay informed about available backup before and during power outages.



**Smart Energy Tracking:** Track power usage patterns and optimize energy consumption for better efficiency and longer backup performance.



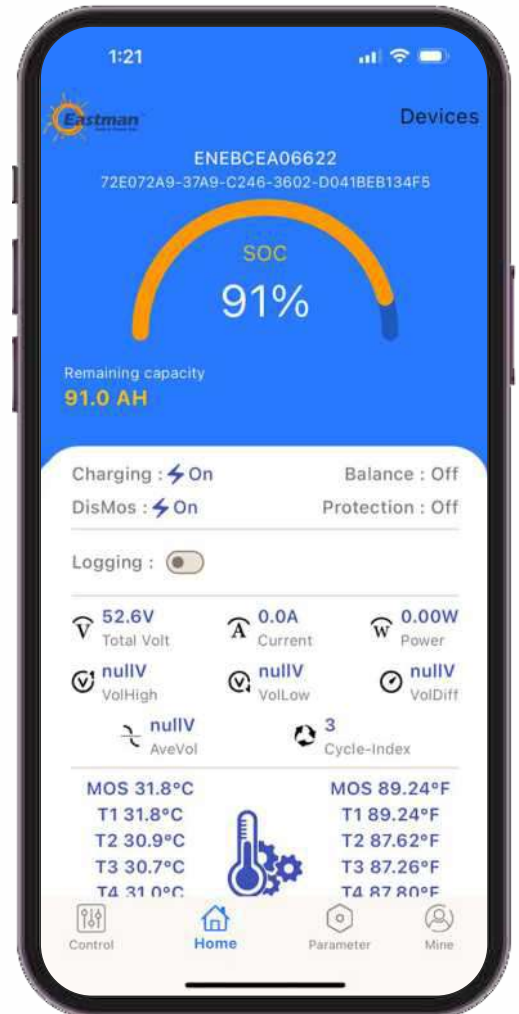
**Bluetooth Connectivity with BMS:** Seamlessly connect your smartphone to the inverter's Battery Management System (BMS) for instant monitoring, diagnostics, and performance updates.



**Intelligent Usage Insights:** Analyze battery health, charging cycles, and energy usage trends to maximize battery life and overall system efficiency.



**Prevent Unexpected Power Failures:** Stay updated on battery and inverter health to avoid sudden breakdowns and ensure uninterrupted power backup with complete peace of mind.



Eastman iConnect App



## Empower your energy experience with **Eastman iConnect App**

Download now from Google Play & App Store



With the Eastman iConnect App, all your energy data is securely stored on Indian servers, fully compliant with Indian data regulations. This ensures complete safety, privacy and peace of mind — keep the system protected within the country's trusted digital infrastructure.



### Round-the-Clock Service

At Eastman, great products deserve equally great service. Through Eastman Assure, we've built a customer-first ecosystem that ensures quick resolutions, proactive support, and peace of mind — every step of the way.



#### AI-Powered Voice Bot

- Get instant support anytime without waiting or follow-ups.
- Raise requests and check warranty or complaint status in seconds.

 **78884 78885**



#### 24x7 Call Centre

- Expert help is always available, day or night.
- Quick, reliable support for installation, service, and troubleshooting.

 **1800-419-8610**



#### Online Complaint Management

- Track your complaint in real time with complete visibility.
- Stay informed at every step until your issue is resolved.



#### Eastman Assure Portal

- One place for all your service needs, simple and convenient.
- Manage warranty, complaints, and service history with ease.



## We are 24x7 Available!

**+91 78728 78728**  
WhatsApp

**1800 419 8610**  
Toll Free Number

**www.eastmanassure.com**  
Service Portal



☎ 1800 419 8610 | ☎ +91 78884 78885



## Eastman Auto & Power Ltd.

**Corporate Office:** Quattro Towers, Plot No. 249E, Udyog Vihar Phase IV, Gurugram,  
Haryana-122016, India | support@eaplworld.com | ☎ 78728 78728  
www.eaplworld.com

 **MADE IN INDIA**